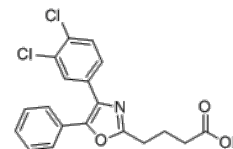


**Product Name** : SWE101  
**Cat. No.** : PC-73058  
**CAS No.** : 2376322-12-0  
**Molecular Formula** : C<sub>19</sub>H<sub>15</sub>Cl<sub>2</sub>NO<sub>3</sub>  
**Molecular Weight** : 376.233  
**Target** : Other Targets  
**Solubility** : 10 mM in DMSO



## Biological Activity

SWE101 (SWE-101, SWE 101) is a potent, selective, in vivo active inhibitor of **soluble epoxide hydrolase (sEH) phosphatase domain (sEH-P)** with IC<sub>50</sub> of 58 nM.

SWE101 showed no significant activity against sEH-H activity, did not inhibit either the hydrolase or phosphatase activity of mouse sEH.

SWE101 is active in rats with favorable pharmacokinetics and revealed the involvement of sEH-P in LPA hydrolysis.

## References

Kramer JS, et al. *J Med Chem.* 2019 Sep 26;62(18):8443-8460.

**Caution: Product has not been fully validated for medical applications. Lab Use Only!**

E-mail: tech@probechem.com